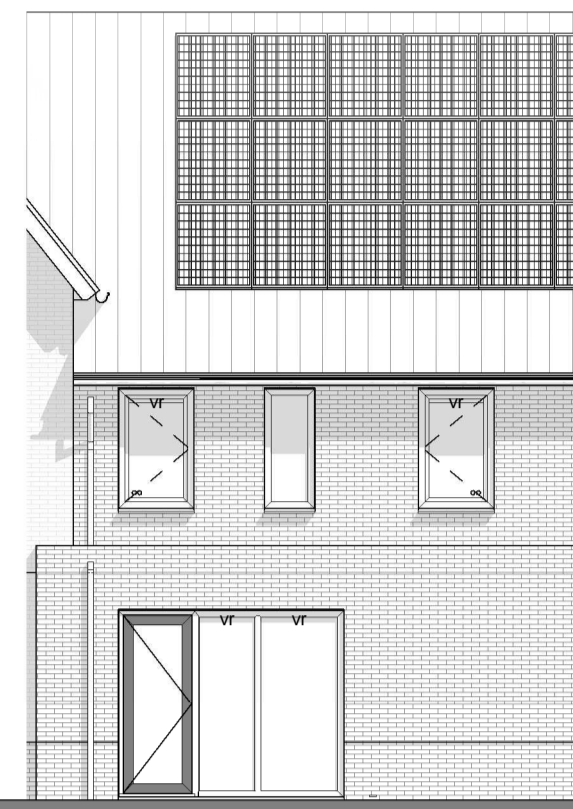
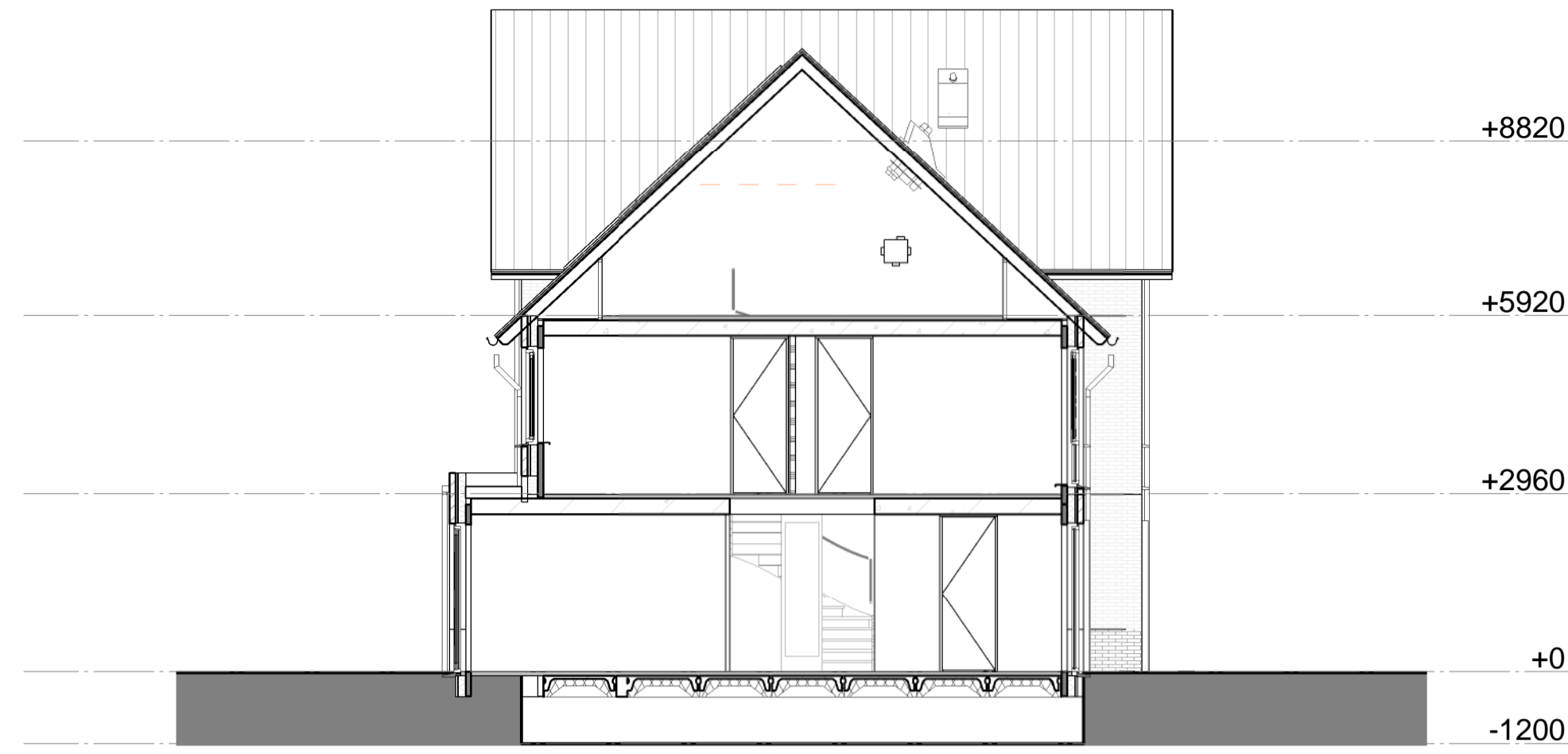




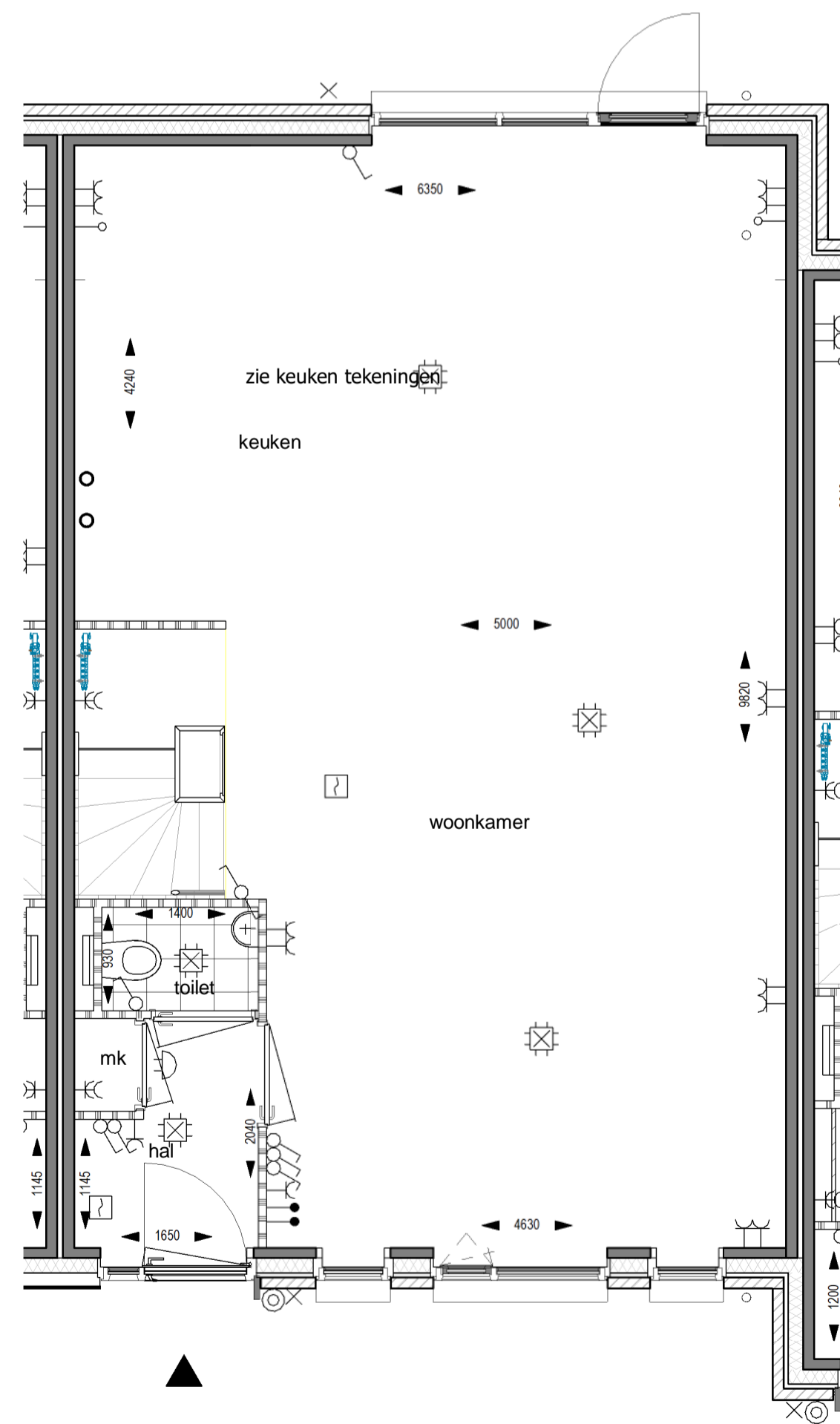
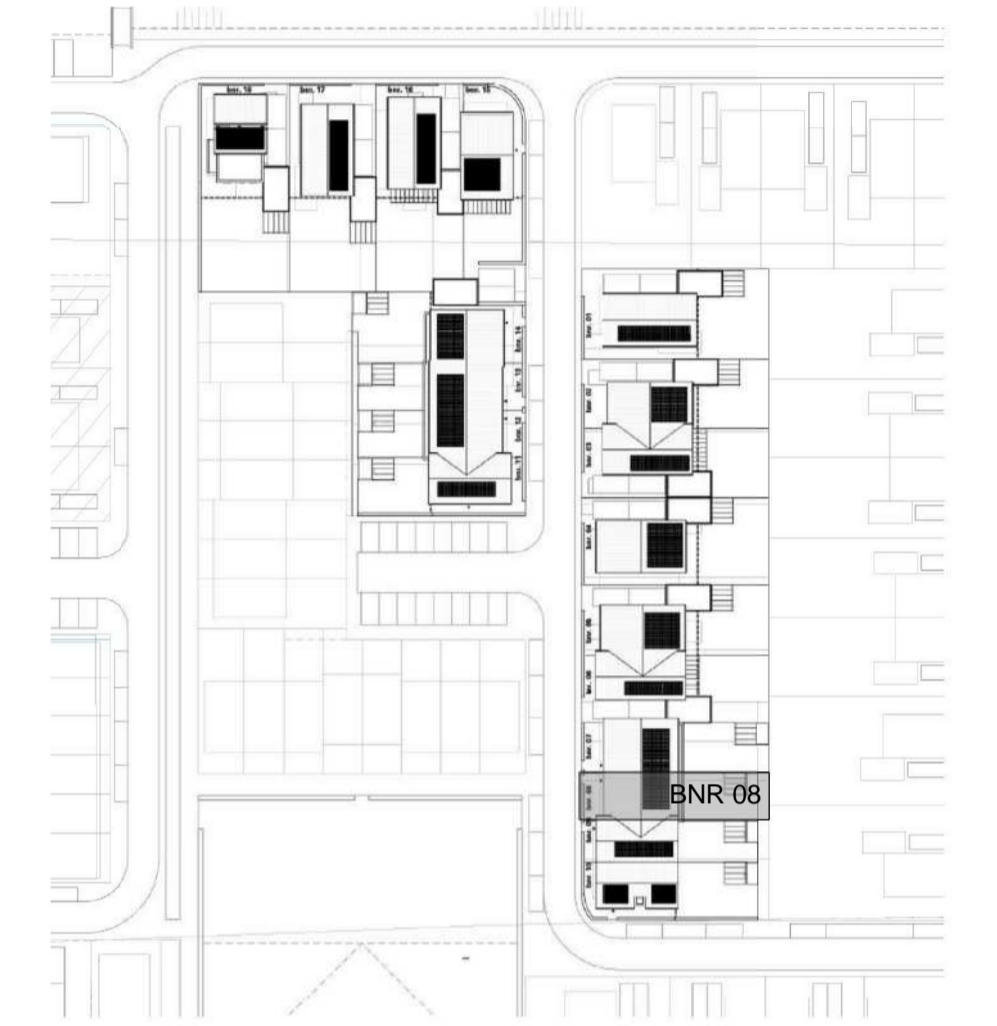
Voorgevel



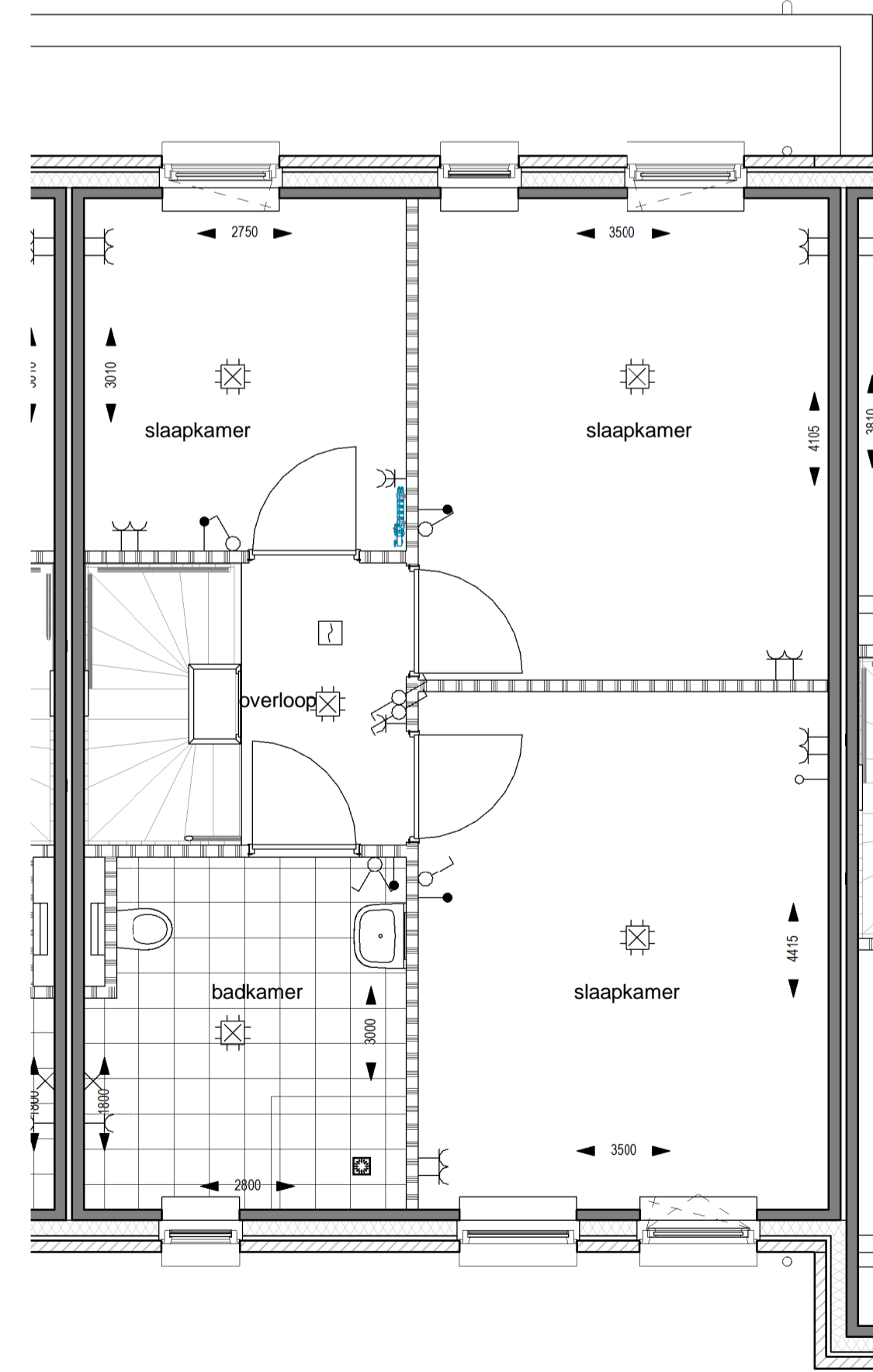
Achtergevel



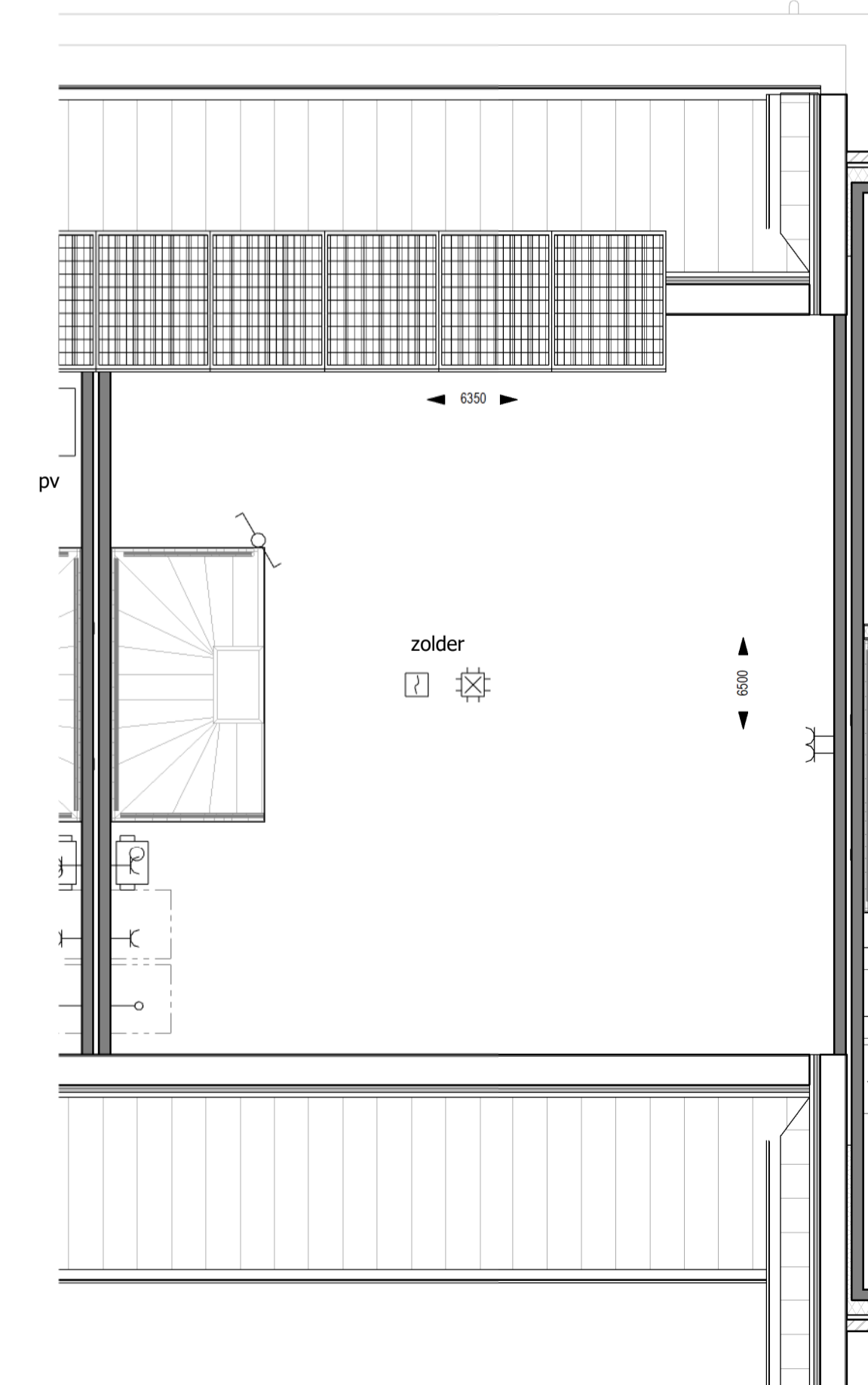
Doorsnede C



Begane grond



Verdieping 1



Verdieping 2

Renvooi elektra

- | | | | |
|--|---|--|-----------------------------------|
| | Rookmelder | | Bel |
| | Schakelaar 1-polig | | Beldrukker |
| | Schakelaar wissel | | Verdelers vloerverwarming |
| | Schakelaar serie | | Afzuigpunt mechanische ventilatie |
| | Enkele wandcontactdoos | | Plafond lichtpunt |
| | Dubbele wandcontactdoos | | Wand lichtpunt |
| | Dubbele wandcontactdoos in 1 ovale inbouwdoos | | Omvormer PV |
| | Dubbele wandcontactdoos in 2 inbouwdozen | | PV- panelen |
| | Loze leiding | | |
| | Bedrade leiding (thermostaat) | | |
| | Bedieningsschakelaar mechanische ventilatie | | |

Renvooi algemeen

- | | |
|--|---------------------|
| | hemelwaterafvoer |
| | installatie schacht |
| | rookmelder |
| | entree |

Renvooi materialen

- | | |
|--|--|
| | isolatie |
| | buitengevel |
| | gibo (normaal) |
| | gibo (zwaar) |
| | gibo (hydro) |
| | prefab betonwand |
| | metselwerk - halfsteens
<small>(volgens M&K schema en gewo)</small> |

Project Veenedaal De Leeftuin
18 woningen

Bouwnummer 08

Datum 24 maart 2018

Schaal 1:50 / 1:100

Formaat A1

